

Melksham Community Area Partnership

Campus Consultation Results
29 March 2011

Chris Holden - Chair

Context

We are Melksham Community Area Partnership

We were asked to consult on proposal

We did:

Questionnaire – 12,500 households

Young People Questionnaire

Open Days – 3

Meetings with groups - 10

Consultation Response

Questionnaire – 803 (= 1400 people)

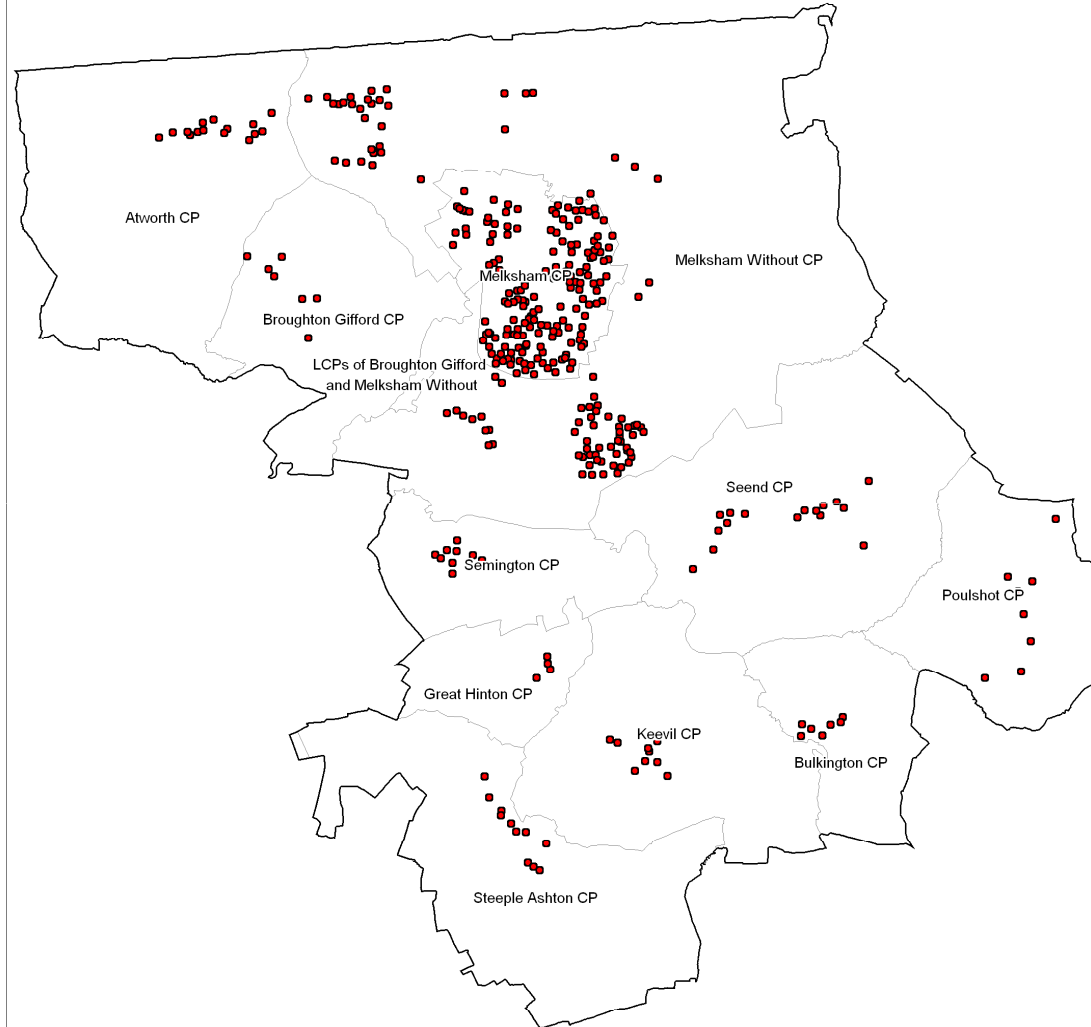
Young People Questionnaire - 78

Open Days – 41

Meetings with groups - 10

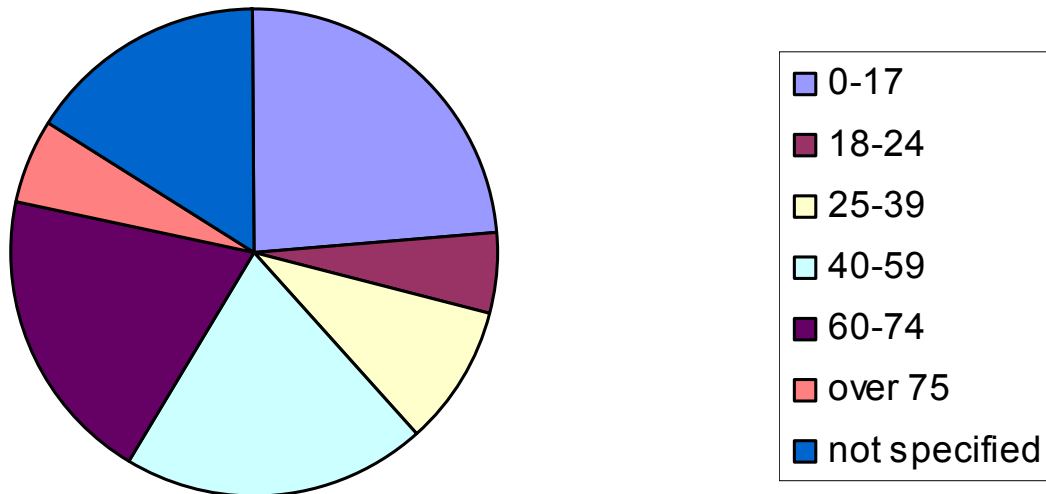
Letters/emails – 17

Questionnaire response – Geography

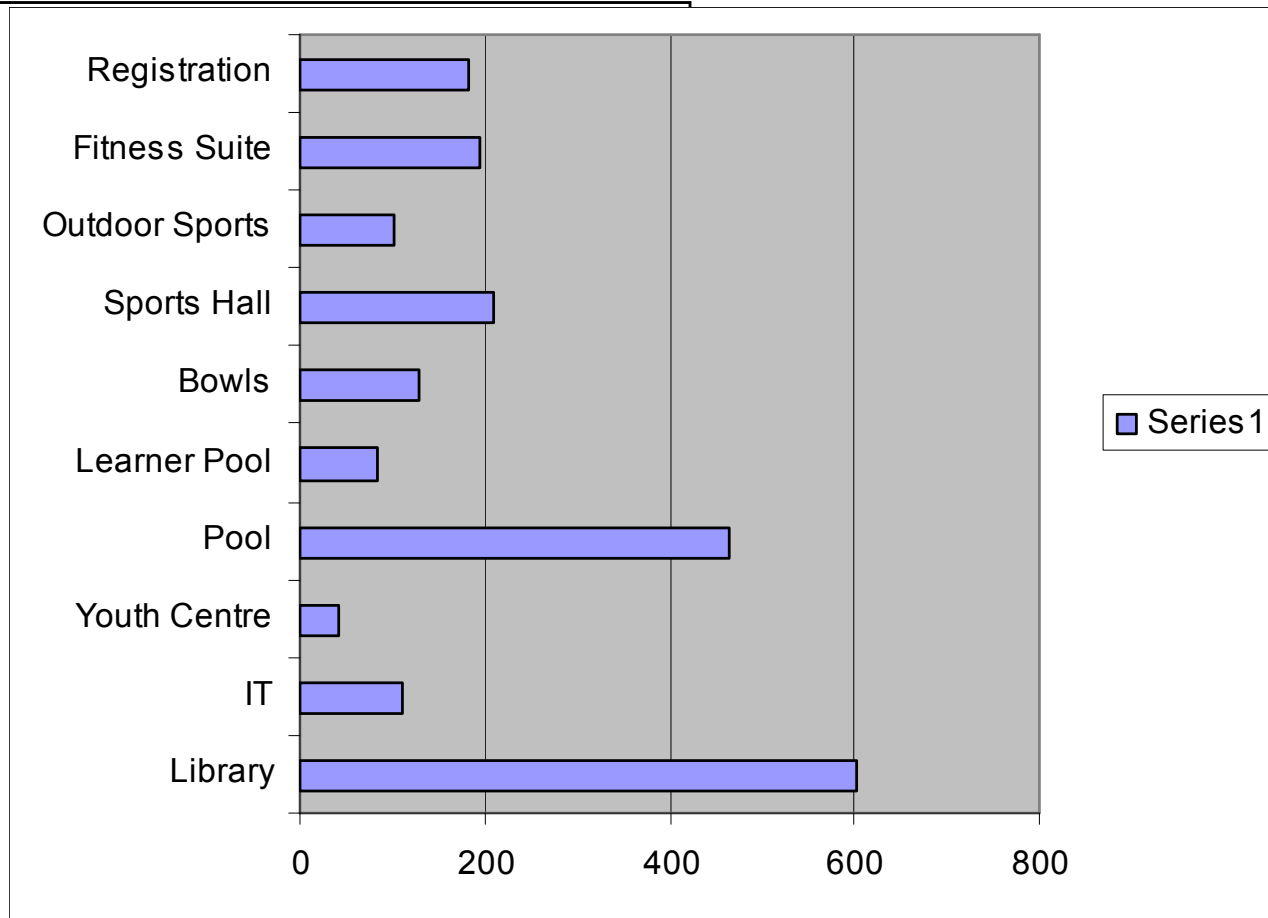


Questionnaire response -Age

People represented in the questionnaires (total 1462)



What services people use



General Response

Positive response - 16% in unqualified support.

The rest raised issues:

Library

Youth Centre

Swimming Pool

Access

Buses

Parking

Cost

Library

Don't move the Library

Access for elderly/disabled

Access for children/schools

Economic impact on Town Centre

Social impact on 'heart' of town

Comments by specific services

	Library	Youth Centre	Swimming Pool	Fitness Suite	Internet	Total
MAIN COMMENTS	284	30	133	51	46	544
YP COMMENTS	1	32	9	4		46
Keep it in town	227	41	33	5	23	329
appreciate/ value service	28	8	8	7	5	56
Update of facilities needed	15		17	12		44
access concerns	19		1	2	1	23
elderly access concerns	9		4		2	15
adult and children separate facilities			13			13
increase size	2		10	1		13
children/ youth access concerns	6		4	1	1	12

Youth Centre

Don't move the Youth Centre

YP Questionnaire:

41% made comments – 100% don't move

Fairness for everyone

Next to school

No one will go

Swimming Pool

On the question specifically about the swimming pool in the questionnaire 133 made a comment, of which 33 said it would be too far

Access

Too far in general 38%, 13%, 14%, 11%

Elderly/disabled

Children/schools

Vulnerable

Transport

Concern about increase of travel

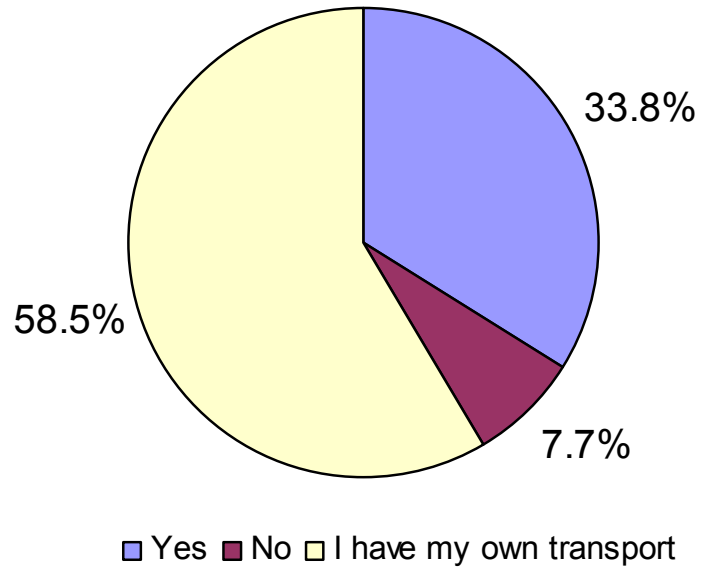
Need for bus

Bus should be free

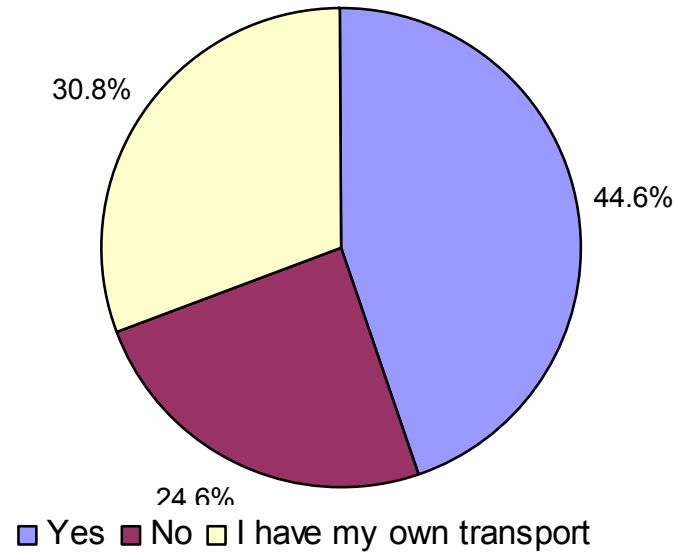
Current bus routes need improving

People who would need a bus

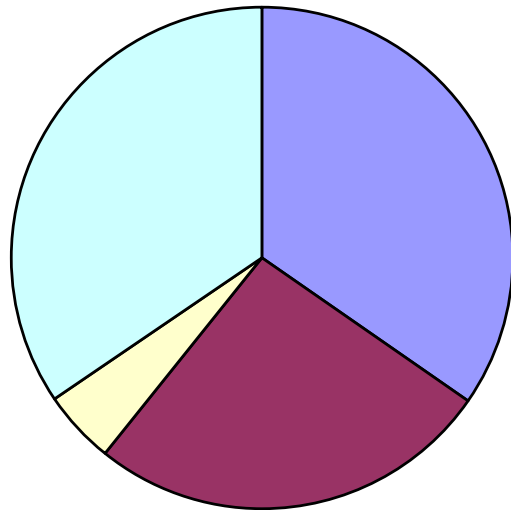
Main



Young people



Where people would require a bus from

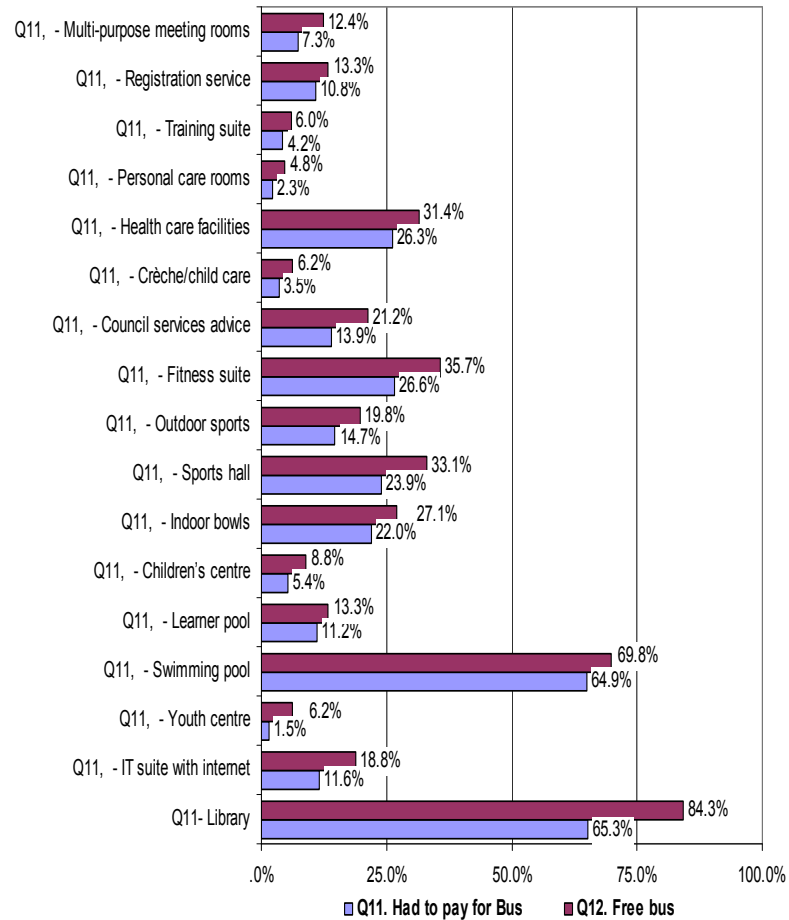


- Melksham town centre
- Other Melksham
- Across whole area
- Villages



- SHAW VILLAGE
- Seend
- Seend Cleeve
- GREAT HINTON
- BROUGHTON GIFFORD
- Bulkington
- Poulshot
- BEANACRE
- Keevil
- Semington
- STEEPLE ASHTON
- BERRYFIELDS

Free bus use



More people would use the campus if a free bus was provided

Most would need bus for Library and Swimming Pool

Parking

Adequate parking needed

Parking should be free

Cost

In general waste of money

Specifically Library as recently refurbished

Specifically Youth Centre as recently refurbished

Concern about cost of use

Concern about cost to the community

Further

Suggestions for inclusion

Details on timings

Details on value of service

Details on what would encourage use of services

<http://www.melksham.communityarea.org.uk>

miriam@melksham.communityarea.org.uk